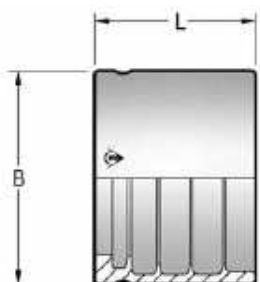
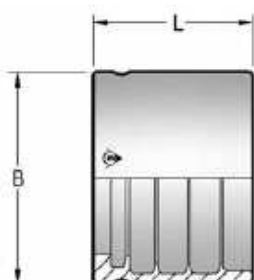


SERIE 110000: GHIERA SUPERTRAK SENZA SPELLATURA - NO SKIVE



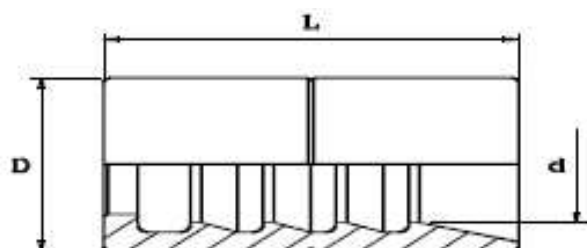
Codice	DI Tubo in	DI Tubo mm	Dash	B DE mm	L Lungh. mm
110000-04	1/4	6,4	04	21,5	25,0
110000-05	5/16	7,9	05	23,0	28,0
110000-06	3/8	9,5	06	25,0	28,0
110000-08	1/2	12,7	08	29,0	31,5
110000-10	5/8	15,9	10	32,0	31,5
110000-12	3/4	19,0	12	36,0	32,0
110000-16	1	25,4	16	45,0	34,5
110000-20	1.1/4	31,8	20	55,0	41,5
110000-24	1.1/2	38,1	24	63,0	45,5
110000-32	2	50,8	32	77,5	46,0

SERIE 220000: GHIERA SUPERTRAK SENZA SPELLATURA - NO SKIVE



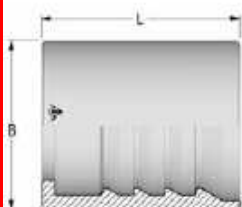
Codice	DI Tubo in	DI Tubo mm	Dash	B DE mm	L Lungh. mm
220000-04	1/4	6,4	04	23,0	25,0
220000-05	5/16	7,9	05	24,5	28,0
220000-06	3/8	9,5	06	27,0	28,0
220000-08	1/2	12,7	08	30,0	31,5
220000-10	5/8	15,9	10	33,5	31,5
220000-12	3/4	19,0	12	37,5	39,1
220000-16	1	25,4	16	48,0	41,0
220000-20	1.1/4	31,8	20	60,0	48,0
220000-24	1.1/2	38,1	24	67,0	48,0
220000-32	2	50,8	32	80,0	54,0

GHIERA CON SPELLATURA - SKIVE R1A



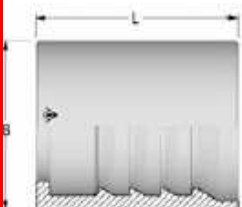
hose ID			D		L		d		skive	
[in]	[mm]	size	[in]	[mm]	[in]	[mm]	[in]	[mm]	[in]	[mm]
3/16"	4,8	03	0,69	17,5	1,06	27,0	0,39	10,0	0,79	20,0
1/4"	6,4	04	0,79	20,0	1,19	30,2	0,53	13,5	0,91	23,0
5/16"	8,0	05	0,87	22,0	1,21	30,7	0,57	14,4	0,91	23,0
3/8"	9,5	06	0,95	24,0	1,26	32,0	0,65	16,5	0,95	24,0
1/2"	12,7	08	1,12	28,5	1,34	34,0	0,81	20,5	0,99	25,0
5/8"	16,0	10	1,26	32,0	1,46	37,0	0,94	23,8	1,06	27,0
3/4"	19,0	12	1,42	36,0	1,69	43,0	1,09	27,6	1,22	31,0
1"	25,4	16	1,69	43,0	1,97	50,0	1,37	34,7	1,46	37,0
1.1/4"	31,8	20	2,05	52,0	2,25	57,0	1,67	42,4	1,65	42,0
1.1/2"	38,1	24	2,25	57,0	2,48	63,0	1,89	48,0	1,73	44,0
2"	50,8	32	2,78	70,6	3,07	78,0	2,41	61,2	2,36	60,0

SERIE 330000: GHIERA SUPERTRAK CON SPELLATURA - SKIVE R2A



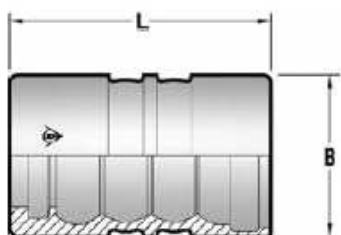
Codice	DI Tubo in	DI Tubo mm	Dash	B DE mm	L Lungh. mm
330000-03	3/16	4,8	03	19,0	23,8
330000-04	1/4	6,4	04	21,0	26,3
330000-05	5/16	7,9	05	22,0	26,5
330000-06	3/8	9,5	06	25,0	28,5
330000-08	1/2	12,7	08	29,0	34,7
330000-10	5/8	15,9	10	32,0	37,5
330000-12	3/4	19,0	12	36,0	41,5
330000-16	1	25,4	16	45,0	47,7
330000-20	1.1/4	31,8	20	58,0	54,6
330000-24	1.1/2	38,1	24	67,0	61,1
330000-32	2	50,8	32	82,0	75,1

SERIE 440000: GHIERA SUPERTRAK 4SP CON SPELLATURA - SKIVE



Codice	DI Tubo in	DI Tubo mm	Dash	B DE mm	L Lungh. mm
440000-04	1/4	6,4	04	22,0	26,3
440000-06	3/8	9,5	06	25,0	28,5
440000-08	1/2	12,7	08	29,0	34,7
440000-12	3/4	19,0	12	36,0	41,5

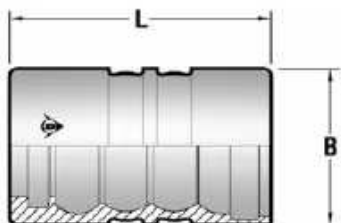
SERIE 190000: GHIERA MULTISPIRALE ALTA PRESSIONE - SKIVE



Codice	DI Tubo in	DI Tubo mm	Dash	B DE mm	L Lungh. mm
190000-08	1/2	12,7	08	33,0	54,0
190000-12	3/4	19	12	41,0	56,0
190000-16	1	25,4	16	49,0	64,0
190000-20	1.1/4	31,8	20	56,0	70,0
190000-24	1.1/2	38,1	24	64,0	82,5
190000-32	2	50,8	32	80,0	82,5

POWERTRAK

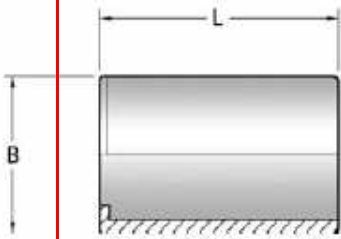
SERIE 130000: GHIERA R13 - SKIVE



Codice	DI Tubo in	DI Tubo mm	Dash	B DE mm	L Lungh. mm
130000-20	1.1/4	31,8	20	61,0	70,0
130000-24	1.1/2	38,1	24	70,0	82,5
130000-32	2	50,8	32	85,0	82,5

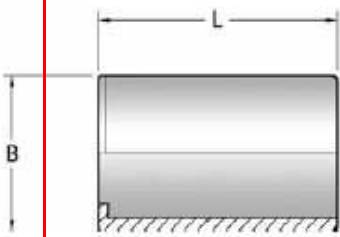
POWERTRAK

SERIE 550000: GHIERA TUBO TEFLON LISCIO - NO SKIVE



Codice	DI Tubo in	DI Tubo mm	Dash	B DE mm	L Lungh. mm
550000-04	1/4	6,4	04	14,9	30,1
550000-05	5/16	7,9	05	16,0	30,5
550000-06	3/8	9,5	06	19,1	32,0
550000-08	1/2	12,7	08	25,0	34,0
550000-10	5/8	15,9	10	29,5	33,1
550000-12	3/4	19,0	12	32,8	43,0
550000-16	1	25,4	16	41,7	51,2

SERIE 540000: GHIERA TUBO TEFLON CONVOLUTO E CORRUGATO - NO SKIVE



Codice	DI Tubo in	DI Tubo mm	Dash	B DE mm	L Lungh. mm
540000-04	1/4	6,4	04	17,8	26,4
540000-06	3/8	9,5	06	20,0	30,4
540000-08	1/2	12,7	08	23,9	32,8
540000-10	5/8	15,9	10	29,2	35,1
540000-12	3/4	19,0	12	31,2	41,0
540000-16	1	25,4	16	38,9	47,0
540000-20	1.1/4	31,8	20	49,7	53,2
540000-24	1.1/2	38,1	24	55,4	58,5
540000-32	2	50,8	32	68,9	72,2